

*2025Q3
Earnings Call*

*Spokesperson:
Justin Kuo*

Date : November 27, 2025



**Sanlien Technology Corp.
(TWSE : 5493)**

Disclaimer

- Sanlien Technology's statements of its current expectations are forward-looking statements subject to significant risks and uncertainties and actual results may differ materially from those contained in the forward-looking statements. Except as required by law, we undertake no obligation to update any forward-looking statement, whether as a result of new information, future events, or otherwise. Please note that while we have made every effort to list all significant risks, there may still be other risk factors that have not been identified or currently appear to be insignificant.

Outline

Sanlien Technology Group

Business Overview

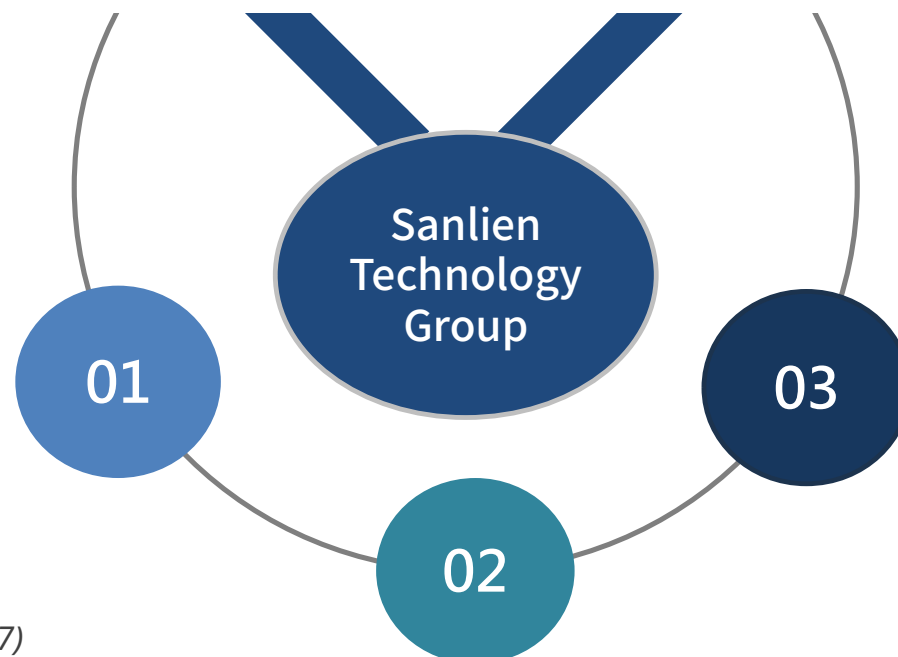
Financial Information

Business Outlook



Sanlien Technology Group

01 | Sanlien Technology Corp. Business Unit



Core Business of Automated Monitoring

Sanlien Technology (Established 1967)

- Environmental Monitoring
- Micro-Vibration Sensing
- Technology & System Integration Services

Electronic Materials Business

Kemitek Industrial Corp (Established 1996)

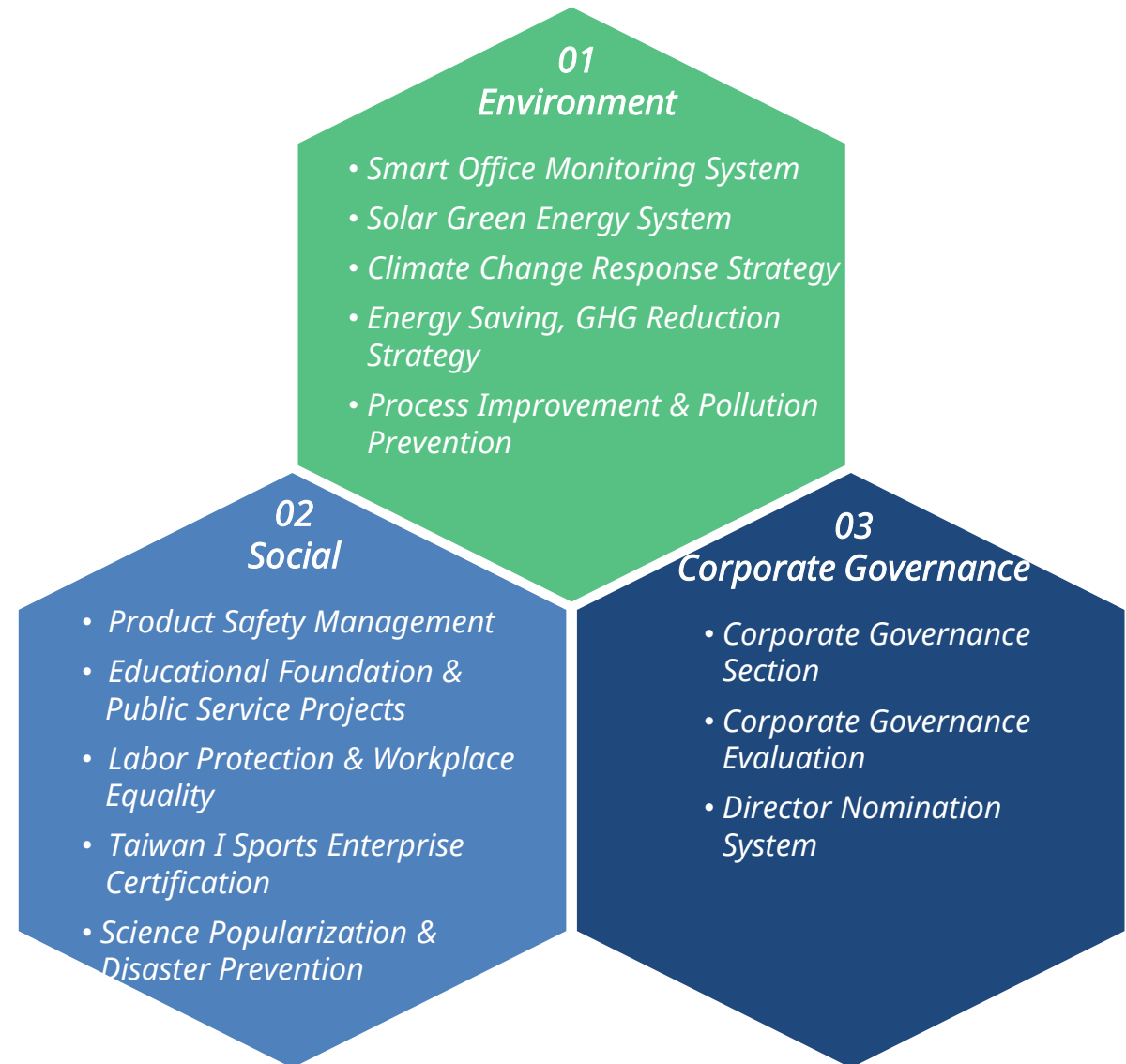
- Supply of Specialty Chemicals for the Semiconductor Industry
- Supply of Specialty Chemicals for the Optoelectronic Panel Industry

Overseas Sensing & Equipment Business

Rift Systems Inc. (Established 2022)

Swiss Branch (Established 2025)

- Supply of Environmental Monitoring Sensors and Equipment
- Technology & System Integration Services



01 | Sanlien Technology Corp. Milestones



1967

Sanlien Established



1973、1979

Shifted to automated monitoring after the two oil crises.



1980~1995

Expansion into Tech-Driven Safety Monitoring



1996

TAF Linear Lab Established



JV with TAMA Chemical Kemitek Industrial

2001

Listed on the Taipei Exchange (TPEX)

1975

Trisco Established



1980

Kaohsiung Branch



1986~1988

*Taipei HQ
Taichung Branch*



1995

National Award For Outstanding SMEs



2000

Hong Kong SANTEK Founded

First locally made earthquake early warning sensor

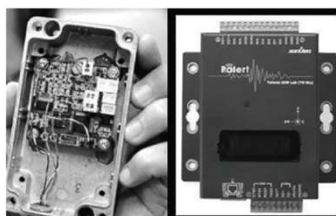
2003

Agnos Chemicals Established in SG



記錄 為科技作見證 為工業寫歷史

01 | Sanlien Technology Corp. Milestones - Continued



2007

*Taiwan's First Earthquake
Early Warning System*



2013

*Kaohsiung Benjhou Product
Dev Center*



2017

*Sanlien 50th
Anniversary*



2019

*EEW Projects in Nepal, Bhutan &
Philippines*

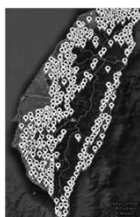


2023

*Kinmen Bridge Structural Monitoring
Palau - Environmental Monitoring*

2009

*Collaboration with Prof.
Wu — 800+ EEW Stations
in Taiwan*



2015

*EEW System Installed in India
(with IIT-R & MoES)*



2018 Global Expansion

*Acquired Siap & Micros
(Meteorological Instruments)*



2022

*RIFT U.S. Subsidiary
Established —
Targeting
Infrastructure
Market*

2024

*World Bank – Indonesia National EEW
System
Taiwan Rail – 50 FBAs Installed*



記
錄 為科技作見證 為工業寫歷史

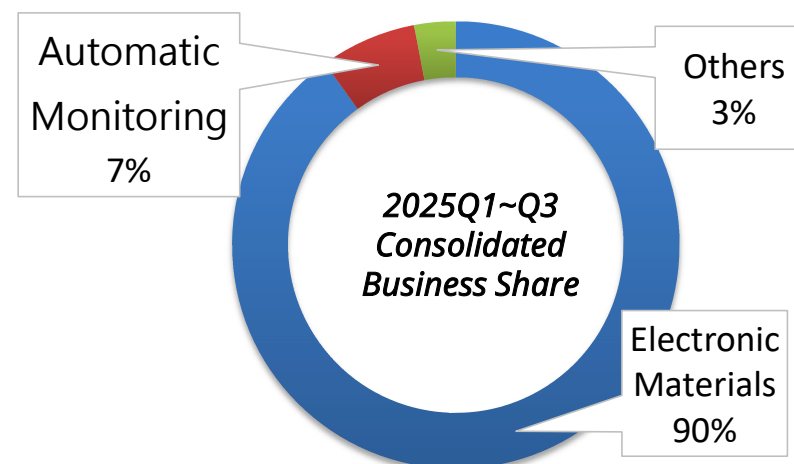
01 | Sanlien Technology Corp. GROUP



<i>Establishment :</i>	1967
<i>OTC Listed :</i>	2001年
<i>Sanlien :</i>	~ 91 Staffs
<i>Sanlien Group :</i>	~ 320 Staffs
<i>2024 Individual :</i>	~ \$NTD 530M
<i>2024 Consolidated</i>	~ \$NTD 4.5 Billion
<i>2025 Q1~Q3 Consolidated</i>	~ \$NTD 4.0 Billion

Our Mission

“Assisting Humanity in Understanding Their Natural and Working Environment” Sanlien is dedicated to helping people gain a better understanding of the environments they live and work in.

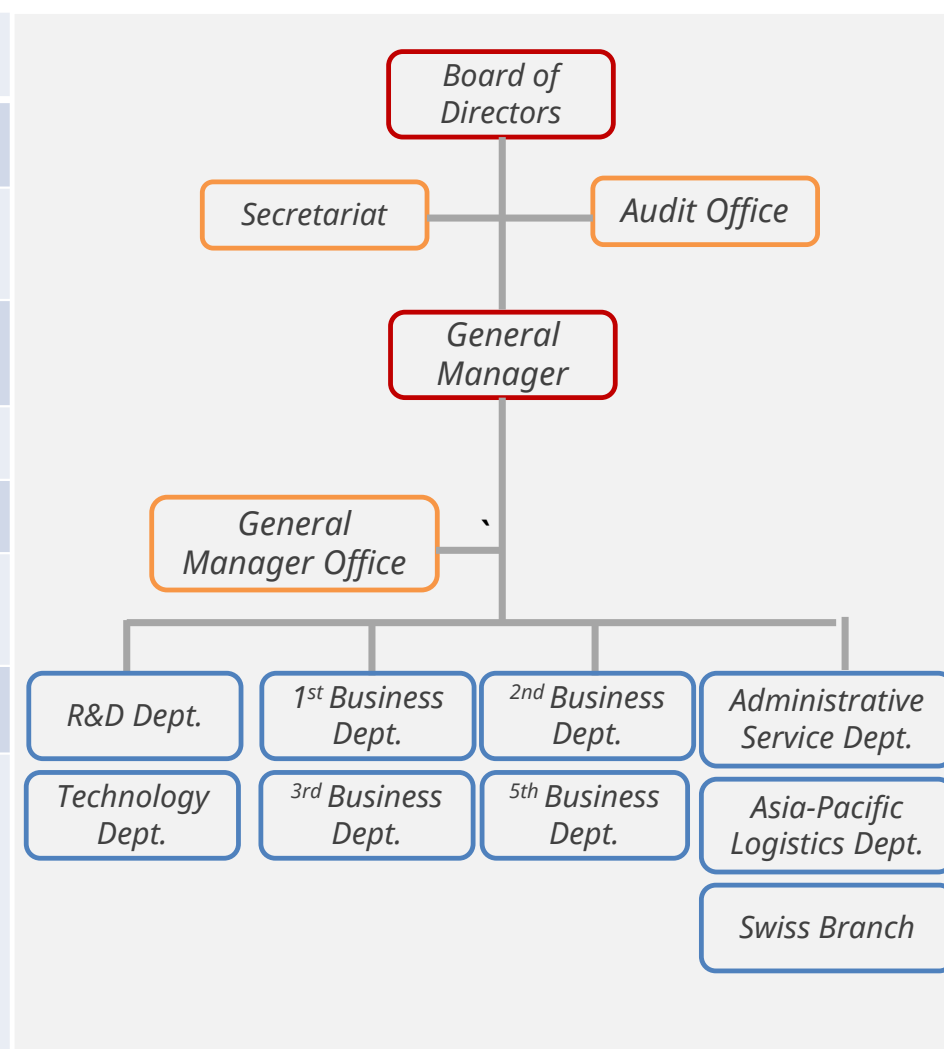


<i>Individual Business</i>	<i>Consolidated Business</i>
Automated Monitoring : <ul style="list-style-type: none"> • Geotechnical Sensors & Cloud Services • Vibration, EEWS & Cloud Services • Cutting plotter, Scanners & Gas Sensors • Industrial & Specialized Sensors, Automation Equipment • TAF Calibration: Length, Vibration & Force 	Chemicals (Semiconductor) <ul style="list-style-type: none"> • Specialty Chemicals for Semiconductor & Optoelectronics • Panel Manufacturing Chemicals: Developer & Film Liquids • Slurry Others: Geelien 、SENTEK 、RIFT

01 | Sanlien Technology Corp. Company Profile



Company Name	Sanlien Technology	
Industry	Other Electronics	
Headquarters	5F-3, No. 390, Section 1, Fuxing South Road, Da'an District, Taipei, Taiwan	
Capital (Unit : NTD 000')	436,893	
Shareholding Structure (2025/03/28)	Domestic Corporation	33.39%
	Domestic Individual	65.28%
	Foreign Institutional Investor Foreign Individual Investor	1.33%
Employees	91 (Including Board Members)	
Operating Locations	<ul style="list-style-type: none">Northern Taiwan: 3F, No. 190, Section 2, Zhongxing Road, Xindian District, New Taipei CityCentral Taiwan: 1F, No. 2, Lane 6, Gongye 1st Road, Xitun District, Taichung CitySouthern Taiwan: No. 17, Bengong 6th Road, Gangshan District, Kaohsiung CitySwitzerland Branch: Birren 10a, 5703 Seon Switzerland	



01 | Sanlien Technology Corp. Operating Locations



03

*Operating Location |
Hsinchu*

1990 – Established
1997 – Kemitek Factory

04

Operating Location | Taichung

1987 – Established

05

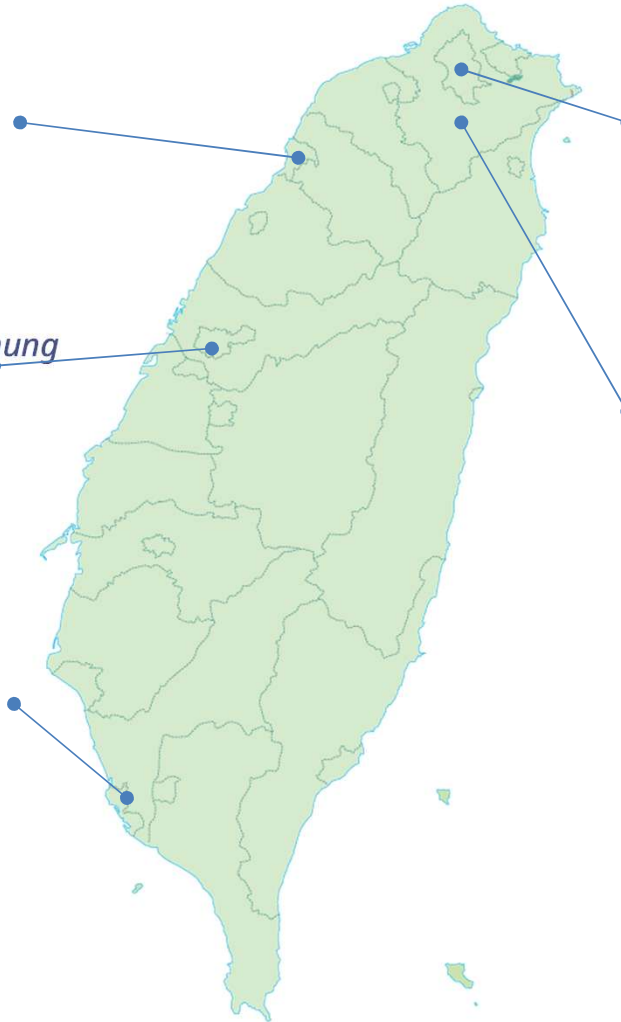
*Operating Location |
Gangshan, Kaohsiung*

- Instrument Manufacturing
- Great-Force Calibration Laboratory

06

*Oversea |
USA, Switzerland*

- RIFT System, CA, USA
- Seon Branch, Aargau



01

Headquarters | Taipei City

1986 - Office Acquired at Fuxing South Road

02

Operating Location | Xindian

- Technical R&D
- TAF Calibration Laboratory
- Logistics & Warehousing



01 | Sanlien Technology Corp. Affiliated Companies



Monitoring Business Strategic Investments

- Trisco Technology 
- SIAP+MICROS Italy 
- Rift Systems Inc. USA 
- SANTEK China 
- P-Waver Inc. 
- Masada 

Semiconductor Industry Chemicals Industry

- Kemitek Industrial Corp. 

Construction Industry Construction Contracting

- Geelien Resource Development Corp. 
- Pujen Land Development 
- Asia World Engineering & Construction Co. 

Others

- Pacific Cycles 
- Others...

Business Overview

02 | Sanlien Technology Corp. Affiliated Companies

Company Introduction :

- *Kemitek Industrial Corp. was established on December 1996 as a joint venture between Sanlien Technology of Taiwan and Tama Chemicals (Japan). The company's core business focuses on high-purity specialty electronic chemicals used in the semiconductor and optoelectronics industries.*
- *Establishment Date : December 23, 1996*
- *Capital: NT\$ 684,000,000*
- *Number of Employees: 232*
- *Chairman : Jun-Lian Chang*
- *General Manager : Ting-Fang Lin*
- *Factory Director : Yoshikatsu Saito*

Management System Certifications	ISO 9001	ISO 14001	ISO 45001 CNS 45001	ISO 17025 CNS 17025
Item	2015	2015	2018 2018	2017 2018

sanlien

sanlien



 多聯科技股份有限公司
Kemitek Industrial Corp.



TMAH Developer & Cleaner

- For IC, LCD, and LED photolithography processes
- Local production with customizable TMAH concentrations up to 25%
- Used in IC cleaning and etching steps

CVD Chemical

- Locally purified TEOS for semiconductor thin-film and diffusion processes

CMP Slurry

- Slurry products for advanced semiconductor wafer fabrication
- Full temperature-controlled management from raw material handling to production, storage, and delivery

Imported Products

- Copper Electroplating Solutions & Additives (from MLI, USA)
- TAMAPURE AA (from TAMA, Japan): Ultra-high-purity laboratory chemicals with purity levels down to ppt



ISO Certifications :

*ISO 9001 、 ISO14001 、 OHSAS 18001 、
ISO 17025 Laboratory Accreditation*

02 | Sanlien Technology Corp. Technology- Driven Product Line



Advancing Environmental Monitoring Through In-House R&D and Academia-Industry Collaboration :

In recent years, we have strengthened our in-house product development and manufacturing capabilities, while expanding innovative applications and product lines through academia-industry partnerships. Our goal is to become a global leader in the field of environmental monitoring. °

Vibration Instruments



Force Balance Accelerometer



Smart Seismic Switch

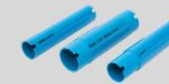


Triaxial Velocity Vibration Sensor



Analogue Accelerometer

Geotechnical Instruments



Inclinometer Casing



VW Rebar Strain Gauge



VW Piezometer

Dataloggers

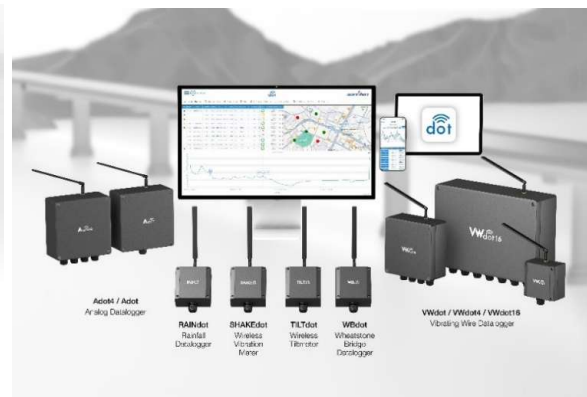


CUBE Onsite Control



VW Datalogger

Analysis Software



02 | Sanlien Technology Corp. Monitoring Scope



Structural Monitoring :

Monitoring high-rise buildings, factories, and public facilities for vibrations and structural integrity to ensure safety and operational stability.

Geotechnical Monitoring :

Covers slopes, deep excavations, tunnels, and bridges, providing stability monitoring for geotechnical structures to support engineering safety management and risk assessment.

Micro-Vibration Monitoring :

Combining Precision Sensors with real-time monitoring to help semiconductor fabs manage vibration risks, ensuring process stability and improving product yield.

Core Technologies & Products :

- *Vibration Sensors: High-precision sensors for earthquake and structural monitoring.*
- *Dataloggers: Multi-channel data acquisition with long-term and real-time support.*
- *Analysis Software: Visualization and analysis platform for quick structural assessment.*
- *Geotechnical Instruments: Inclinometers, tiltmeters, piezometers, and other monitoring devices.*



02 | Sanlien Technology Corp. Core Business Applications - EEWS



Earthquake Early Warning System :

Using Precision Sensors and advanced algorithms, the system detects earthquakes in real time and issues alerts at critical moments, providing valuable time to take protective measures.

System Features :

- Wide-Area Broadcast: Rapid regional alerts.
- Emergency Shutdown: Protects critical equipment.
- Real-Time Alerts: Scrolling text display.
- Mobile Integration: Push notifications via LINE/WhatsApp.



02 | Sanlien Technology Corp. Core Business Applications – EEWS Case Studies



Taiwan



50 Sets of Taiwan Railway FBA

Introduction :

- Taiwan Railways is a key national transportation system connecting major cities and regions, providing essential passenger and freight services.

Scope of Analysis and Implementation:

- Railway Earthquake Early Warning System

Taiwan



Forest Railway – Alishan Railway Equipment Installation

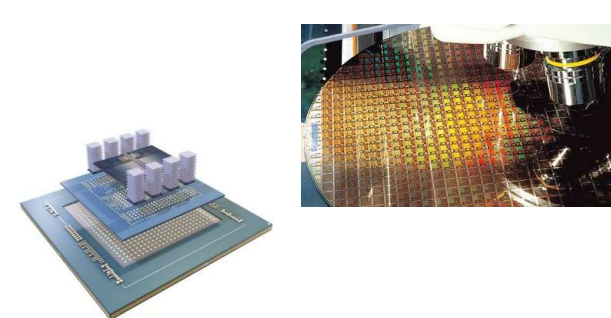
Introduction :

- Once vital to Taiwan's forestry transport, parts of the railway have since transformed into tourist lines with cultural value.

Scope of Analysis and Implementation :

- Railway Seismic Early Warning System

Taiwan



Wafer Fabs & OSAT Facilities Earthquake Early Warning System

Introduction :

- A semiconductor packaging and testing service provider offering comprehensive back-end chip processing solutions.

Scope of Analysis and Implementation :

- Earthquake early warning for high-tech facilities.

02 | Sanlien Technology Corp. Core Business Applications – Taipei Metro EEWS



Sanlien Technology's pALERT F330 is a three-axis force-balanced accelerometer that seamlessly integrates with earthquake monitoring systems. It continuously collects seismic data and issues alerts when thresholds are exceeded, automatically or manually triggering emergency train stops and equipment shutdowns to enhance passenger safety.

Taipei Metro, carrying approximately 2.08 million passengers daily across 5 lines and 117 stations, serves as a representative case for demonstrating earthquake early warning technology. The pALERT F330 is currently installed at 15 stations within the Taipei Metro network. In the event of a magnitude 4 or higher earthquake, this innovative technology rapidly detects and issues alerts, showcasing its reliable performance in safeguarding metro passengers.

Taipei Metro — Earthquake Early Warning System & Force-Balanced Accelerometers



02 | Sanlien Technology Corp. Core Business Applications – Structural Health Monitoring



The HAZUS SHM system, paired with in-house seismic sensors, can measure building vibrations in real time. Using analytical algorithms, the system rapidly and accurately assesses structural damage.



pALERT Q332 |

Tri-axial Quartz MEMS Accelerograph

High-precision accelerograph with ultra-low noise, exceptional stability, and wide dynamic range—ideal for EEW, seismic observation, vibration, and structural health monitoring.



SHAKE SS300 |

Smart Seismic Switch

An advanced seismic switch featuring a tri-axial MEMS accelerometer, Modbus RTU communication, and multi-relay control for automatic emergency shutdown during earthquakes.



CUBE |

Onsite Control & Display Interface

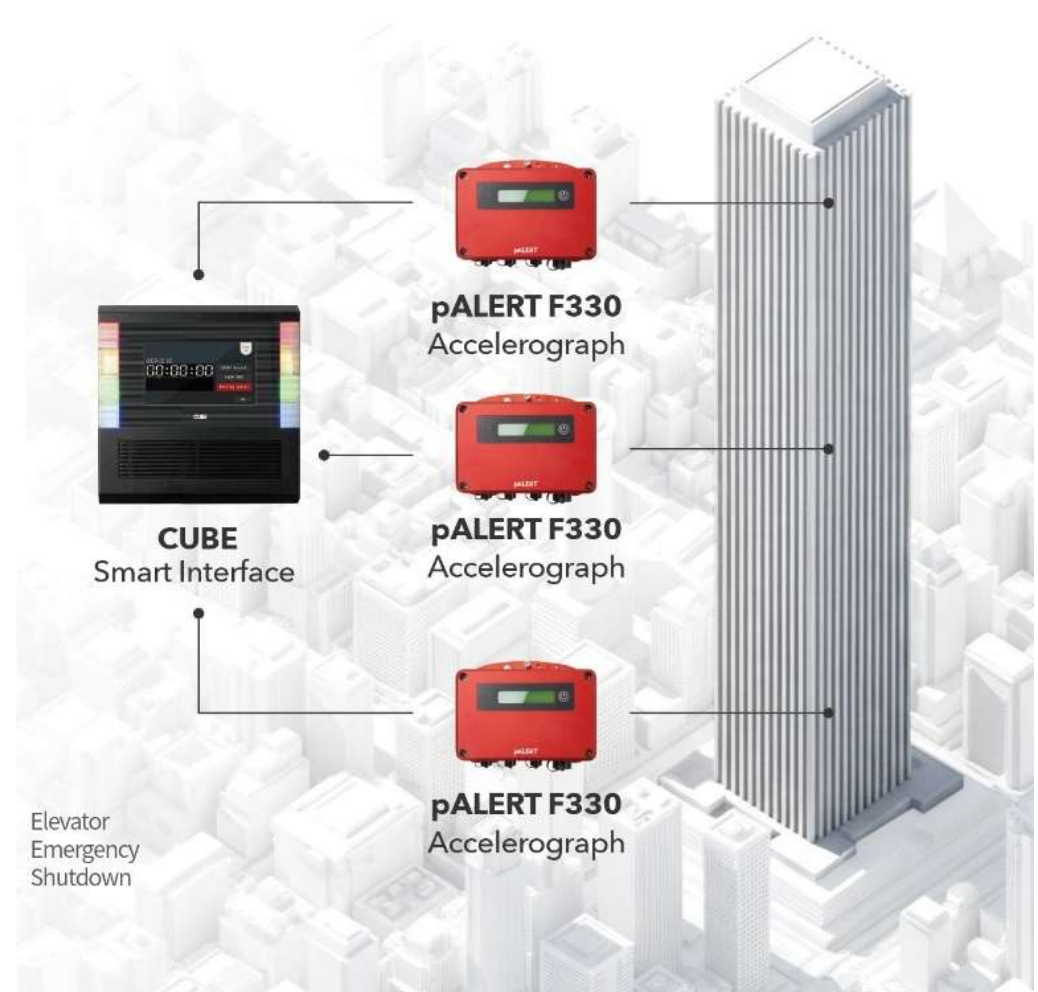
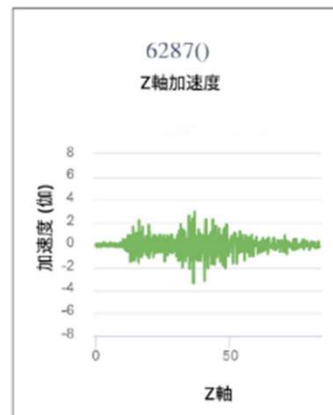
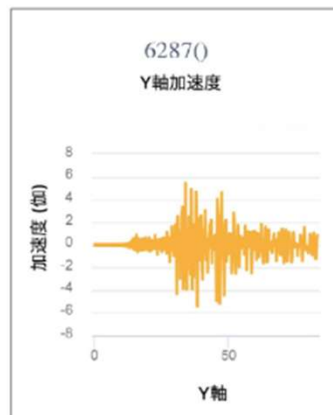
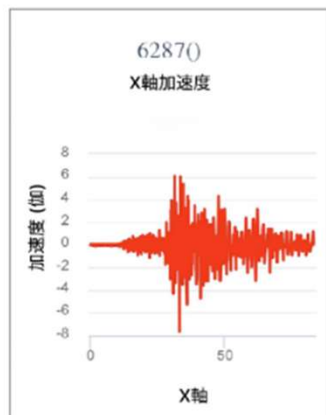
CUBE is an all-in-one onsite earthquake early warning command center, alarm device, and datalogger featuring visual and voice alerts, Modbus, MQTT, and SeedLink integration, along with built-in HAZUS rapid structural damage assessment



SanDAS |

Sanlien Data Acquisition System

SanDAS is a cross-platform data acquisition and management software for civil and earthquake engineering, seamlessly integrating with Sanlien dataloggers and vibrating sensors to provide real-time monitoring, analysis, and remote data access.

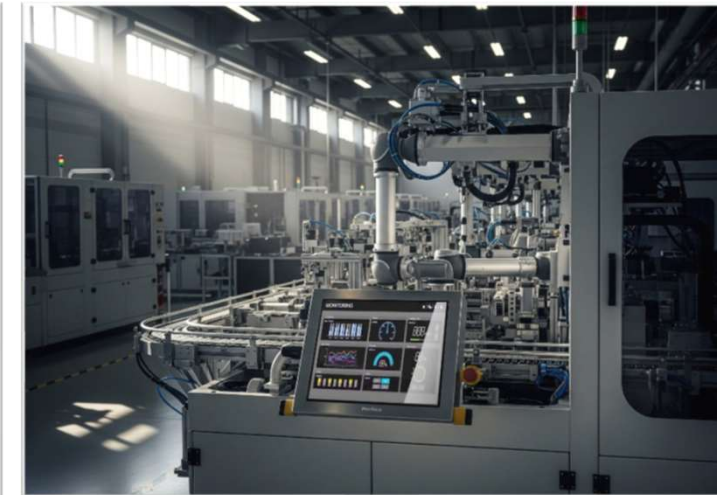


02 | Sanlien Technology Corp. Core Business Applications – SHM Cases



Through our post-earthquake analysis reports, users can monitor the structural safety status in real time.

- Wafer Fabs
- Data centers
- OSAT Facilities
- Social Housing

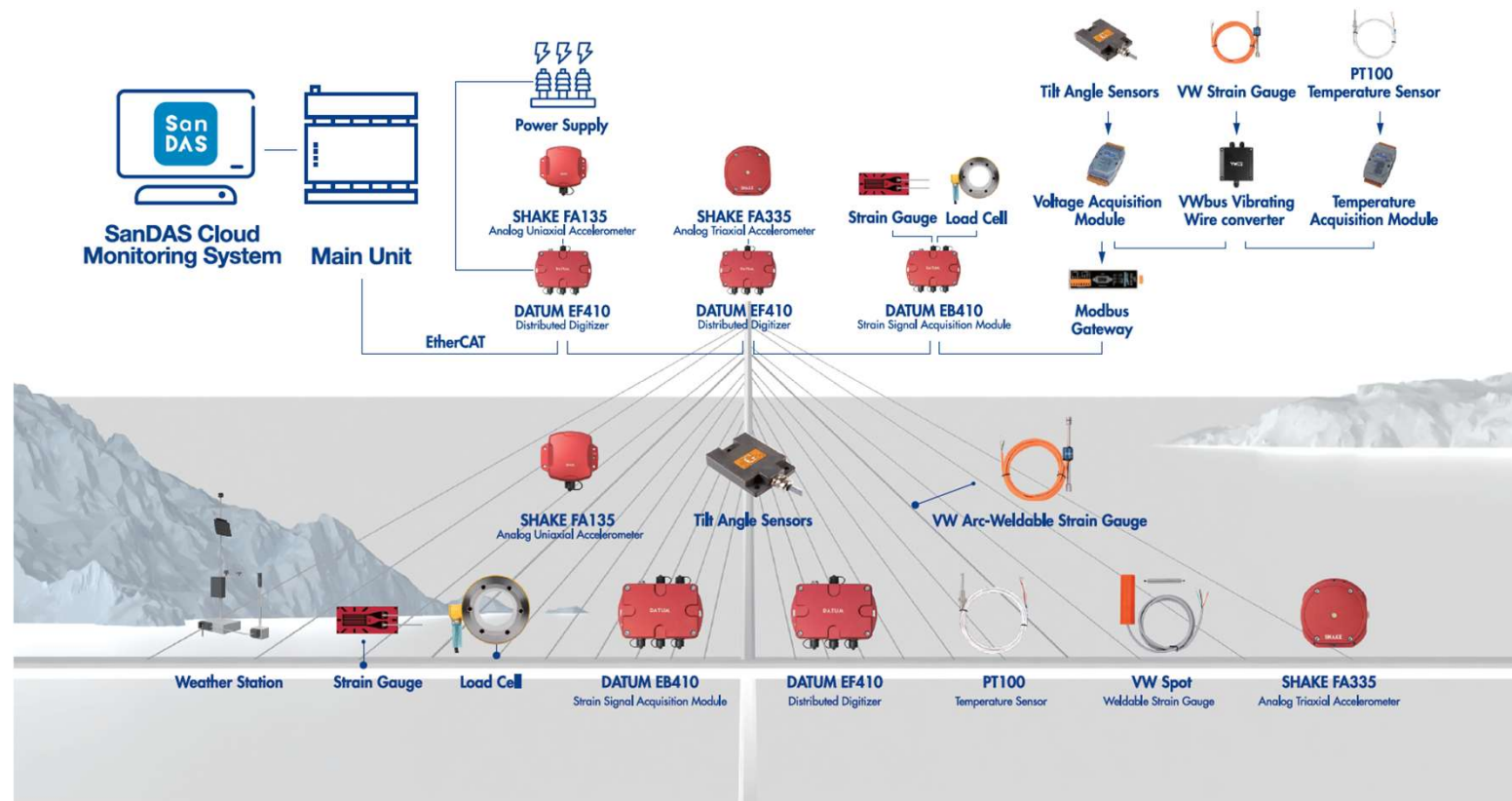


02 | Sanlien Technology Corp. Core Business Applications – Bridge Monitoring



Bridges are vital transportation links within cities and across regions, and their structural safety directly affects public mobility and safety. As bridges age, external forces such as earthquakes and climate impacts increase structural risks. Implementing real-time, proactive smart monitoring systems has become a necessary measure.

Bridge Structural – Health Monitoring System Architecture



02 | Sanlien Technology Corp. Core Business Applications – Bridge Monitoring Cases



Thailand



Kanchanaphisek Bridge
Cable-Stayed Bridge

Introduction :

- Cable-stayed bridge over the Chao Phraya River, 951 m long with 168 cables.

Scope of Analysis :

- Vibration Modes, Strain Trends, Bridge Tower Curvature, Pier RSHD

Vietnam



Cầu Rạch Miễu 2
Cable-Stayed Bridge

Introduction :

- A cable-stayed bridge located in the Mekong Delta region of Vietnam.

Scope of Analysis :

- Vibration Modes, Strain Trends, Bridge Tower Curvature, Bridge Pier RSHD

Taiwan



Kinmen Bridge
Extradosed Bridge

Introduction :

- With a total length of 5.4 km, it was opened to traffic on October 30, 2022.

Scope of Analysis :

- Steel Cable Tension Monitoring System, Load Testing

02 | Sanlien Technology Corp. Core Business Applications – Reservoir SHM



Hybrid Environmental Monitoring :

Structural Health Monitoring (SHM) systems are deployed at reservoirs and dams, integrating accelerograph, inclinometers, and piezometers to monitor structural stability and water level changes in real time. The system also provides earthquake early warning and rainfall monitoring, delivering comprehensive safety surveillance and disaster alerts.

System Features :

- *Multi-Sensor Integration: Monitors seismic activity, tilt, water pressure, water level, and rainfall simultaneously.*
- *Real-Time Transmission: Data is automatically uploaded to the cloud for instant analysis and alerts.*
- *Disaster Early Warning: Provides alerts for earthquakes and environmental changes to enhance protective response.*
- *Stable Monitoring: Designed for 24/7 operation with high durability, ensuring long-term reliability.*



02 | Sanlien Technology Corp. Core Business Applications – Reservoir Monitoring Cases



Taiwan



Jianshanpi Reservoir

Introduction :

- Jianshanpi Reservoir, located in Tainan City, is a multifunctional reservoir primarily used for irrigation and water supply.

Scope of Analysis and Implementation:

- Hybrid Environmental Monitoring, Structural Health Monitoring of Reservoir Infrastructure

Taiwan



Jiaxian Weir

Introduction :

- Jiaxian Weir, located in Kaohsiung City, diverts water from the Qishan River to supply domestic and irrigation needs.

Scope of Analysis and Implementation:

- Earthquake Early Warning System

Taiwan



Chengcing Lake

Introduction :

- Chengcing Lake, located in Kaohsiung City, is an important water supply reservoir in southern Taiwan and a well-known tourist destination.

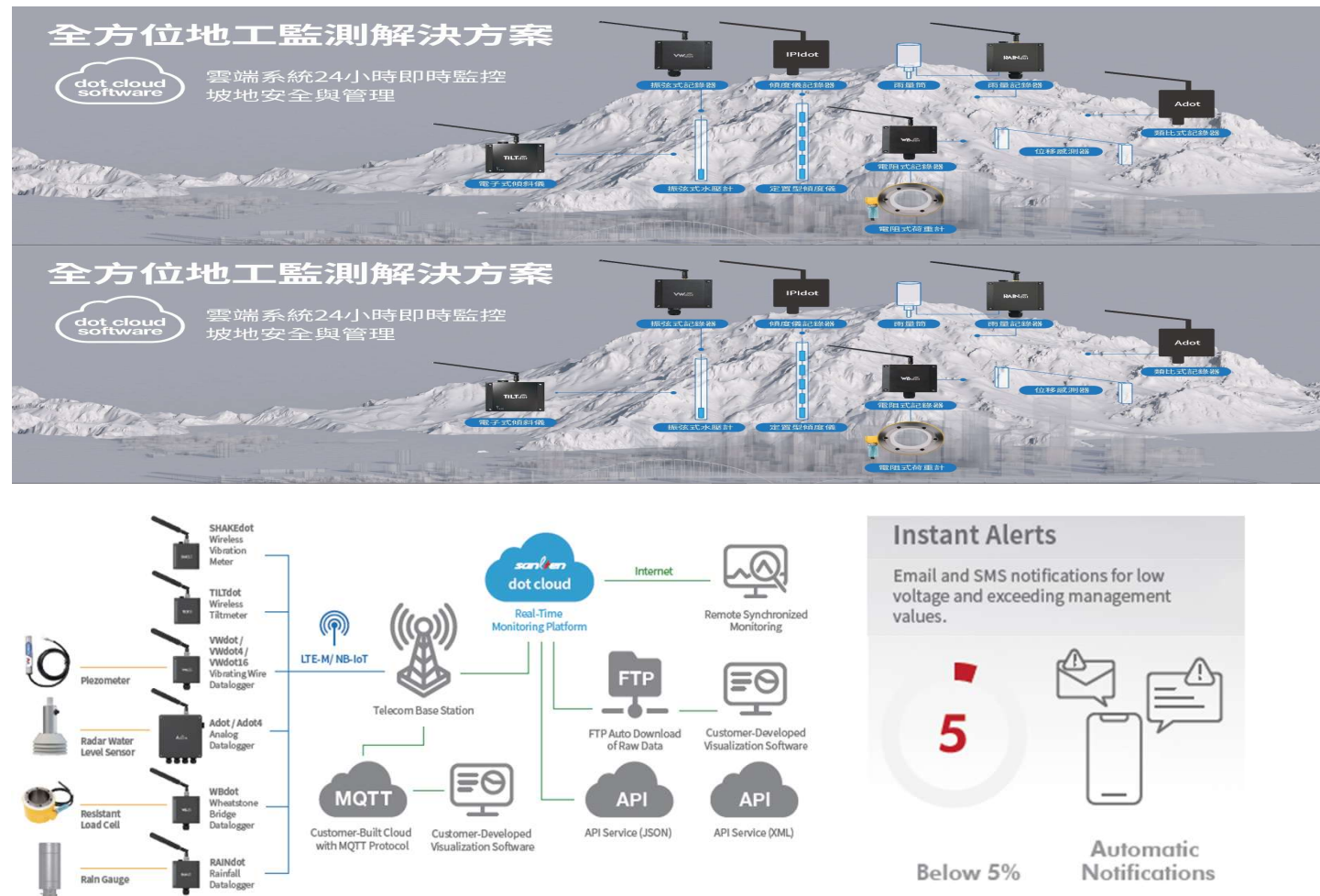
Scope of Analysis and Implementation:

- Earthquake Early Warning and Structural monitoring

02 | Sanlien Technology Corp. Core Business Applications – Geotechnical Monitoring



Geotechnical monitoring combines various sensors with dataloggers to collect and analyze real-time deformation and stability data from slopes, deep excavations, and bridge structures. The system incorporates safety threshold indicators (Action, Warning, Alert, and Safe levels) and real-time alarm functions, enabling comprehensive, real-time monitoring and safety management.



02 | Sanlien Technology Corp. Core Business Applications – Deep Excavation Monitoring



Urban renewal projects often require removing deep foundations, making construction far more complex than standard excavations. At the Qingcheng Street project in Taipei, existing 14-meter foundations and retaining structures were dismantled using a bracing method, followed by diaphragm wall reconstruction. Monitoring instruments—including inclinometers, strain gauges, piezometers, and neighboring building tiltmeters—were deployed to ensure safety.

Sanlien Technology's dot cloud platform, paired with in-house IoT dataloggers and sensors, provides 24/7 automated real-time monitoring. Users can view data remotely, and the system issues email or SMS alerts when thresholds are exceeded, enabling timely early warning.

MEMS Tiltmeter Installation

Deep Excavation Safety Monitoring

*Tilt, Groundwater Level, and
Structural & Geotechnical Performance Monitoring*



02 | Sanlien Technology Corp. Global Strategic Partners



FIGARO



GRAPHTEC



KINKEI SYSTEM CORPORATION

KYOWA

sanlien Global Partners



mti instruments

osmos
STRUCTURAL HEALTH MONITORING

PMT

Pro-face™
by Schneider Electric

Life Is On | Schneider Electric

sara
electronic instruments

SHINWA
シンワ株式会社

SONIC
CORPORATION

WORLD SENSING

02 | Sanlien Technology Corp. Sensing Business Division – Automated Monitoring



Multi-Brand Sensing & Measurement Components

- KYOWA Strain Gauges, Pressure Transducers, Torque Transducers, Load Cells
- KYOWA Amplifiers
- KYOWA / Midori / AEC / MTI Displacement Sensor
- KYOWA / AEC Acceleration Transducer
- Midori Potentiometer
- Figaro Gas Sensors



Multi-Brand Datalogger & Acquisition Systems

- GRAPHTEC Temperature Loggers / Temperature–Humidity Loggers
- GRAPHTEC High-Speed / High-Speed High-Voltage Datalogger
- KYOWA Compact Data Loggers / Universal Recorders / Data Acquisition Units



Industrial Systems & HMIs

- Proface Industrial / Flagship HMIs
- Proface Programmable HMIs / Handheld HMIs







Power Fault & Power Quality Monitoring Series

Measurement & Industrial Systems:

Measurement and control systems, PCB testing instruments, railway industry testing equipment, and optoelectronic/vision systems



<i>Auto Sheet Feeder Unit</i>	<i>Roll Feed Cutting Plotter</i>	<i>Garment Pattern Cutting Plotter</i>	<i>Flatbed Cutting Plotter</i>
<i>Printing</i>	<i>Sign</i>	<i>Manufacturing</i>	<i>Apparel</i>
<ul style="list-style-type: none">• <i>Sticker Decals</i>• <i>Promotion Tools</i>• <i>Package</i>• <i>Heat Transfer</i>	<ul style="list-style-type: none">• <i>Billboard</i>• <i>Traffic Sign</i>• <i>Vehicle Aftermarket</i>	<ul style="list-style-type: none">• <i>Flexible Board</i>• <i>Vehicle Aftermarket</i>• <i>Backlight Film</i>	<ul style="list-style-type: none">• <i>Shoes Patterns</i>• <i>Clothes Patterns</i>
			

02 | Sanlien Technology Corp. TAF Instrument Calibration Laboratory

Vibration Calibration Laboratory

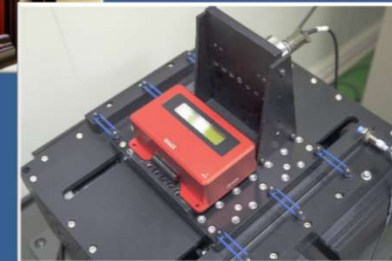
- *Sanlien Technology's third TAF-accredited laboratory*
- *The only laboratory nationwide certified for Accelerograph calibration*
- *Provides manufacturing, distribution, and calibration to ensure optimal performance*

Force Calibration Laboratory

- *The nation's first professional calibration laboratory for load cells over 200 T*
- *Comprehensive instrument calibration services*
- *Impartial and reliable inspection reports*
- *Instant calibration report*

Length Calibration Laboratory

- *The only nationally certified laboratory for angle calibration*
- *High-standard calibration services*
- *Advancing Taiwan's engineering measurement standards*



Financial Information

03 | Financial Summary



Unit: NT\$ thousand

Item / Period	2025Q1~Q3	2024Q1~Q3	YoY(%)	2024FY
Revenue	4,022,511	3,276,268	+22.78 %	4,504,004
Gross Profit	499,901	450,046	+11.07 %	618,416
Operating Income	278,877	212,678	+31.12 %	291,612
Non-operating Income	98,253	114,133	-13.91 %	146,887
Net Income	311,577	263,672	+18.16 %	349,956
Net Income Attributable to Parent Company	150,236	145,700	+3.11 %	183,338
EPS(NTD)	3.44	3.33	+3.11 %	4.20

03 | Revenue Breakdown by Business Segment

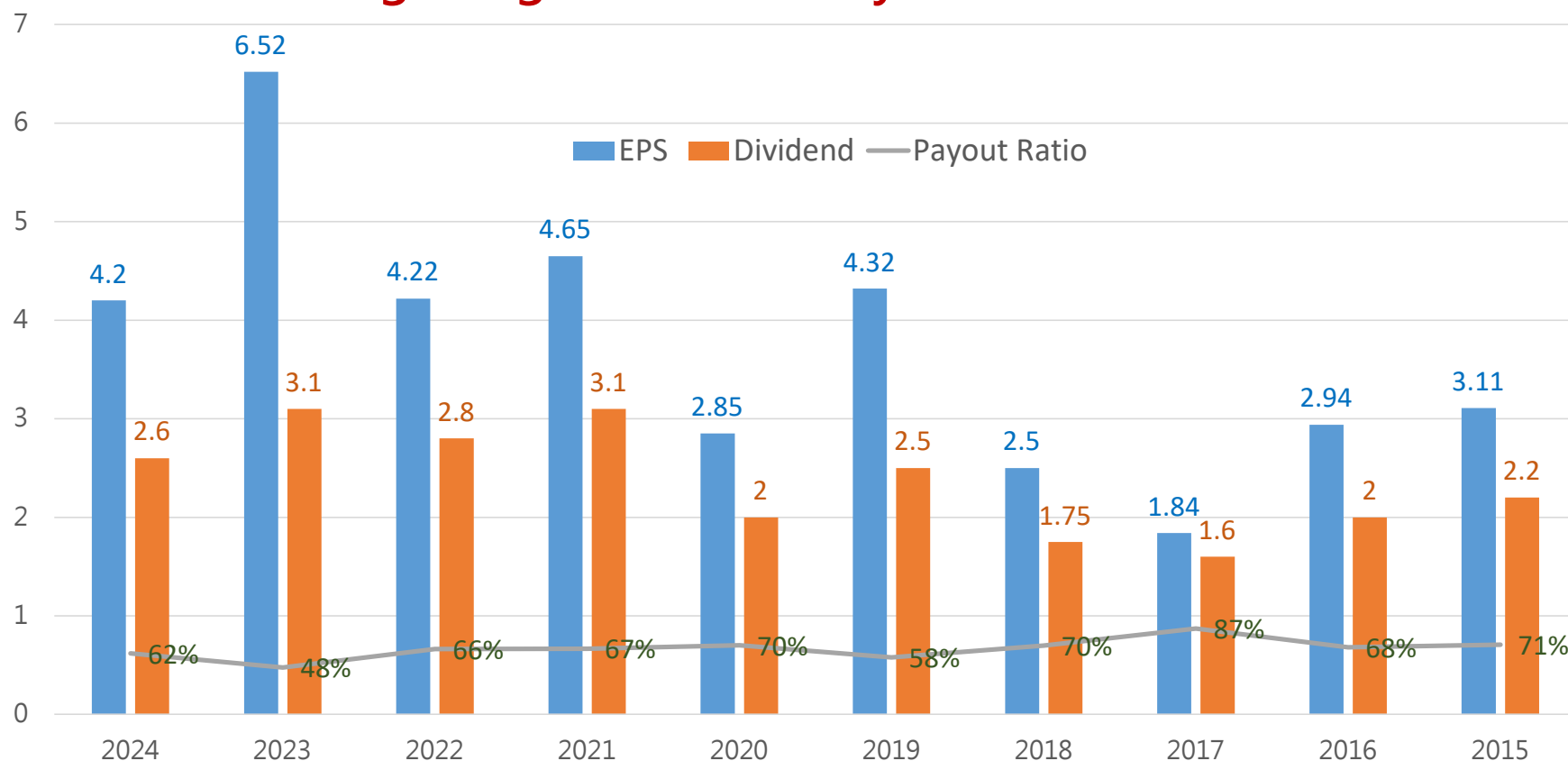


Segment Revenue	2025Q1~Q3	2024Q1~Q3	Revenue Contribution %	YoY%
Electronic Materials- Electronic Chemicals	3,642,689	2,803,245	90.56 %	+29.95 %
Automatic Monitoring	285,659	387,908	7.10 %	-26.36 %
Overseas Sensing	54,568	41,134	1.36 %	+32.66 %
Others	39,595	43,981	0.98 %	-9.97 %
Total	4,022,511	3,276,268	100%	+22.78 %

03 | Stable Dividend Policy



Delivering Long-Term Stability in Shareholder Returns



Business Outlook

04 | Sanlien Technology Corp. Performance Overview



2025

- Awarded the "Sports Enterprise" Certification by Taiwan I Sports
- Hosted the 2nd Global Partner Conference
- Held the "dot Homecoming " Product Seminar & Workshop
- Participated for the first time in the Semiconductor Expo, focusing on semiconductor monitoring solutions
- Awarded the Taiwan Railways Project for 50 Strong Motion Accelerographs
- Awarded the Alishan Forest Railway – Earthquake Early Warning System Deployment project
- Awarded the World Bank – Indonesia National Earthquake Early Warning System project
- 2025 Received the "Taiwan BIC Award"

2024

- Ranked among the Top 6–20% of Listed Companies in the 10th Corporate Governance Evaluation
- 2024 Received the "Taiwan BIC Award"



04 | Sanlien Technology Corp. Growth Prospects

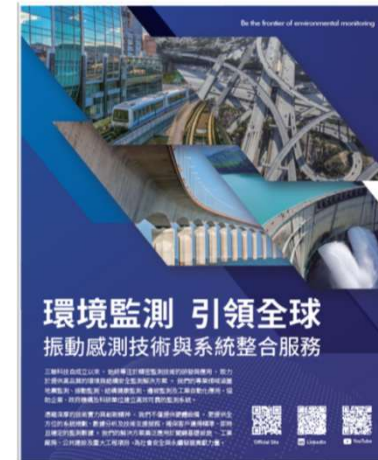


Operational Strategy:

- Focus on core businesses, strategically invest for the future, manage operations dynamically, and continuously drive transformation and upgrading.
- Delivering environmental monitoring solutions that ensure safety and comfort for cities, enterprises, and critical infrastructure.

Business Outlook:

- Stable Supply of Electronic Chemical Materials for Advanced Semiconductor Processes
- Smart Monitoring Systems: Continue developing intelligent systems for structural, vibration, environmental, and geotechnical monitoring, with applications in smart cities, vibration safety, and geotechnical fields to expand business scope.
- Structural Safety & Earthquake Early Warning Systems: Expand from B2B to B2C and commercial facilities, enhancing personal and community disaster resilience.
- Product Strategy: Drive internationalization and diversification, deepen partner collaboration, and grow overseas distribution.





THANKS